

PART OF SECTION 33, T.7N., R.2W., S.L.B. & M.

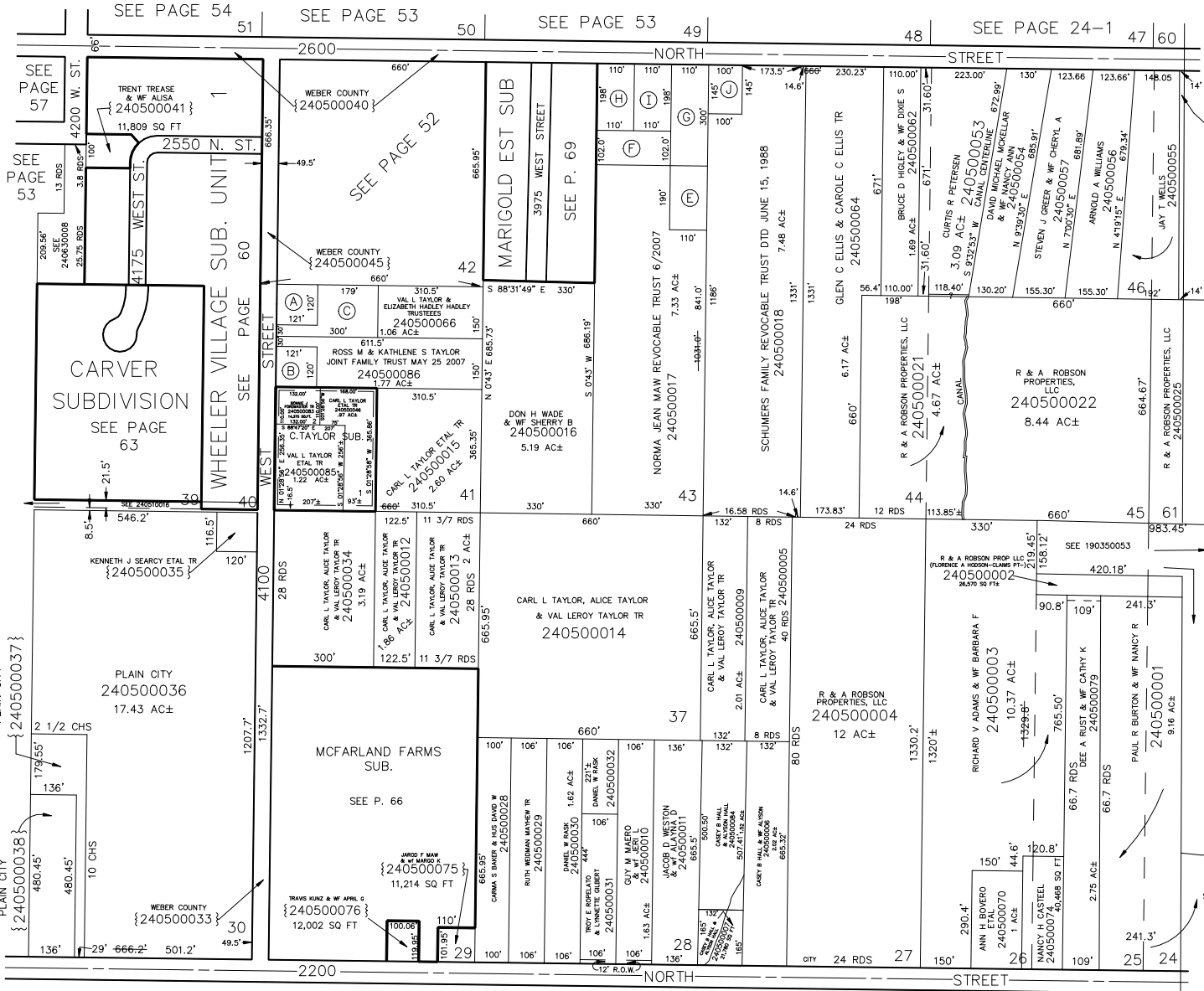
PLAIN CITY

LOTS 24 TO 30, & 37, 39 TO 46, & 61, PLAT B

TAXING UNIT: 21

SCALE 1" = 250'

SEE PAGE 24-1



<p>SEE PAGE 47</p> <p>(A) LARRY LEWIS & WIFE KATE 240500058</p>	<p>(B) ROSS M & KATHLENE S TAYLOR JOINT FAMILY TRUST MAY 25 2007 240500059 14,520 SQ FT</p>	<p>(C) VAL L TAYLOR & ELIZABETH HADLEY TAYLOR TRUSTEES 240500067 0.69 AC±</p>	<p>(E) JOHN DAN MAW & WIFE URAINA 240500073 20,900 SQ FT</p>	<p>(F) NORMA JEAN MAW REVOCABLE TRUST 6/2007 240500048 22,440 SQ FT</p>	<p>(G) JOHN DAN MAW & WIFE URAINA 240500072 33,000 SQ FT</p>	<p>(H) DEAN C ELLIS TRUST=1/2 SHELLY K ELLIS TRUST=1/2 240500077 21,780 SQ FT</p>	<p>(I) MARVIN R SCHUMERS 240500078 21,780 SQ FT</p>	<p>(J) KEVIN L POULSEN 240500080 14,500 SQ FT</p>
---	---	---	--	---	--	---	---	---

SEE BOOK 19, PAGE 35

SEE BOOK 19 PAGE 35-2

SEE PAGE 51

SEE PAGE 53

SEE PAGE 57

SEE PAGE 54

SEE PAGE 53

SEE PAGE 53

SEE PAGE 24-1

CARVER SUBDIVISION SEE PAGE 63

PLAIN CITY 240500036 17.43 AC±

PLAIN CITY 240500038

WEBER COUNTY 240500033

MCFARLAND FARMS SUB. SEE P. 66

WEBER COUNTY 240500076

MARGOLD EST SUB

DON H WADE & WIFE SHEROY B 240500016

CARL L TAYLOR, ALICE TAYLOR & VAL LEROY TAYLOR TR 240500014

PLAIN CITY 240500009

PLAIN CITY 240500010

SEE P. 69

NORMA JEAN MAW REVOCABLE TRUST 6/2007 240500017

SCHUMERS FAMILY REVOCABLE TRUST DTD JUNE 15, 1988 240500018

CARL L TAYLOR, ALICE TAYLOR & VAL LEROY TAYLOR TR 240500009

CARL L TAYLOR, ALICE TAYLOR & VAL LEROY TAYLOR TR 240500004

PLAIN CITY 240500005

PLAIN CITY 240500006

GLEN C ELLIS & CAROLE C ELLIS TR 240500064

BRUCE D HIGLEY & WIFE DIME S 240500062

R & A ROBSON PROPERTIES, LLC 240500021

R & A ROBSON PROPERTIES, LLC 240500002

RICHARD V ADAMS & WIFE BARBARA F 240500003

ANN H ROVERO 240500070

NANCY H CASTEEL 240500074

CURTIS R PETERSEN 240500053

STEVEN J CREER & WIFE CHERYL A 240500057

R & A ROBSON PROPERTIES, LLC 240500022

R & A ROBSON PROPERTIES, LLC 240500025

PAUL R BURTON & WIFE NANCY R 240500001

DEAN C ELLIS TRUST=1/2 SHELLY K ELLIS TRUST=1/2 240500077

DEAN C ELLIS TRUST=1/2 SHELLY K ELLIS TRUST=1/2 240500077

DEAN C ELLIS TRUST=1/2 SHELLY K ELLIS TRUST=1/2 240500077

ARNOLD A WILLIAMS 240500054

ARNOLD A WILLIAMS 240500054

ARNOLD A WILLIAMS 240500054

ARNOLD A WILLIAMS 240500054

ARNOLD A WILLIAMS 240500054

ARNOLD A WILLIAMS 240500054

ARNOLD A WILLIAMS 240500054

ARNOLD A WILLIAMS 240500054

JAY T WELLS 240500055

JAY T WELLS 240500055

JAY T WELLS 240500055

JAY T WELLS 240500055

JAY T WELLS 240500055

JAY T WELLS 240500055